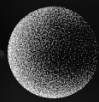




ELEVATION CAPITAL®



ELEVATION CAPITAL  
GLOBAL SHARES FUND

# ANNUAL REPORT

*Dated: 18 July 2022*



ELEVATION CAPITAL  
GLOBAL SHARES FUND

## **Elevation Capital Global Shares Fund – 2022 Annual Report**

This Annual Report covers the accounting period from 1 April 2021 to 31 March 2022 (**Accounting Period**).

### **Details of the Scheme**

The name of the scheme is the Elevation Capital Managed Investments Schemes (**Scheme**).

The type of scheme is an 'Other Managed Fund' (i.e. a managed fund which is not a KiwiSaver scheme, workplace savings scheme or superannuation scheme).

The Scheme offers investment in one managed investment product, the Elevation Capital Global Shares Fund (**Fund**).

The Manager of the Scheme is: Elevation Capital Management Limited.

The Supervisor of the Scheme is: Public Trust.

The latest Product Disclosure Statement (**PDS**) for the Scheme is dated 5 May 2022 and is open for applications.

The latest fund update, dated 31 March 2022, was lodged with the Registrar on 9 May 2022.

The Scheme's latest financial statements and the auditor's report, for the year ended 31 March 2022, were dated 18 July 2022 and lodged with the Registrar on 18 July 2022.

The Elevation Capital Global Shares Fund mainly invests in the shares of listed companies, although it may invest in unlisted companies up to a total limit of 10% of Net Asset Value of the Fund. The companies we invest in may be based and operate anywhere in the world.

### **Information on Contributions and Scheme Participants**

The number of managed investment products on issue at the start, and end of the Accounting Period was 1.

The number of units on issue in the Fund at the start of the Accounting Period was 11,060,909 (01/04/2021).

The number of units on issue in the Fund at the end of the Accounting Period was 13,829,066 (31/03/2022).

### **Changes relating to the Scheme**

There have been no material changes to the Governing Documents, nature or terms of the Scheme or fund, the Statement of Investment Policy and Objectives, or the management of the Scheme over the Accounting Period.

Other Information for particular types of managed funds

The unit price for the Fund at the start of the Accounting Period was \$2.0724 (01/04/2021).

The unit price for the Fund at the end of the Accounting Period was \$2.0973 (31/03/2022).

There have been no related party transactions (as defined in sections 172 and 173 of the Financial Markets Conduct Act 2013) entered into during the accounting period.



ELEVATION CAPITAL  
**GLOBAL SHARES FUND**

**Changes to Persons involved in the Scheme**

**Manager:** There were no changes to the Manager of the Scheme.

**Directors and Key Personnel of the Manager:** There were no changes to the Directors and Key Personnel of the Manager.

**Supervisor:** There were no changes to the Supervisor of the Scheme.

**Board of the Supervisor:** The Supervisor had no changes to its Board during the Accounting Period.

**Administration Manager, Investment Manager, Securities Registrar, Custodian, Auditor:** There were no changes during the period.

**How to find further information**

Further information relating to the Scheme can be obtained free of charge from the scheme register and the offer register available at [www.disclose-register.companiesoffice.govt.nz](http://www.disclose-register.companiesoffice.govt.nz) (search 'Elevation Capital').

The scheme register includes the trust deed, statement of investment policy and objectives, financial statements and annual reports.

The offer register includes the product disclosure statement, other material information, material contracts and quarterly fund updates.

The above information is also available free of charge by contacting the Manager, using the following contact details:

Attention: Christopher Swasbrook  
Email: [chris.swasbrook@elevationcapital.co.nz](mailto:chris.swasbrook@elevationcapital.co.nz)  
Telephone: (09) 379 6493

**Contact details and Complaints**

If you have a question or complaint, please contact us.

We can be contacted at:

Elevation Capital Management Limited, The Blade, Level 4, 12 St Marks Road, Remuera, Auckland 1050, New Zealand.

Attention: Christopher Swasbrook (for enquiries)

Attention: Craig Stobo (for complaints)

Telephone: (09) 379 6493  
Email: [info@elevationcapital.co.nz](mailto:info@elevationcapital.co.nz)



ELEVATION CAPITAL  
**GLOBAL SHARES FUND**

You can also contact the Supervisor, Public Trust at:  
General Manager, Corporate Trustee Services  
Public Trust  
SAP Tower, Level 16, 151 Queen Street, Auckland CBD  
Auckland 1010  
or at:  
Private Bag 5902  
Wellington 6140

Telephone: 0800 371 471  
Email: [cts.enquiry@publictrust.co.nz](mailto:cts.enquiry@publictrust.co.nz)

If your complaint can't be resolved by us or the Supervisor, you can refer it to one of the following approved dispute resolution schemes. They won't charge you a fee to investigate or resolve your complaint.

**Manager's Approved Dispute Resolution Scheme**

Insurance & Financial Services Ombudsman Scheme  
Level 2, Solnet House  
70 The Terrace  
Wellington 6143  
or at:  
Insurance & Financial Services Ombudsman Scheme  
PO Box 10-845,  
Wellington 6143

Telephone: 0800 888 202  
Website: [www.ifso.nz](http://www.ifso.nz)  
Email: [info@ifso.nz](mailto:info@ifso.nz)

**Supervisor's Approved Dispute Resolution Scheme**

Financial Services Complaints Limited  
Level 4, 101 Lambton Quay, Wellington 6011  
or at:  
PO Box 5967  
Wellington 6140

Telephone: 0800 347 257  
Website: [www.fscl.org.nz](http://www.fscl.org.nz)  
Email: [complaints@fscl.org.nz](mailto:complaints@fscl.org.nz)

You may also contact MMC Limited (the securities registrar).  
They can be contacted at:  
MMC Limited, Level 25, QBE Centre, 125 Queen Street, Auckland 1010,  
or at:  
MMC Limited, PO Box 106 039, Auckland 1143  
Attention: Nicola Tait